

Integrating Justice40 into a CBP

Jared Hawkins, Battelle

Presented with funding under DE-FE0031836

MRCI Stakeholder Meeting, Community Benefits Plan Workshop,
Oct. 3, 2023, Morgantown WV

Justice40 Process

Justice40 Assessment

- Community demographics
- Underlying issues faced
- Positive and Negative Impacts and where they flow

Justice40 Implementation

- Goals, milestones, and timelines
- Identify barriers to realizing benefits and minimizing impacts
- Build team and provide resources

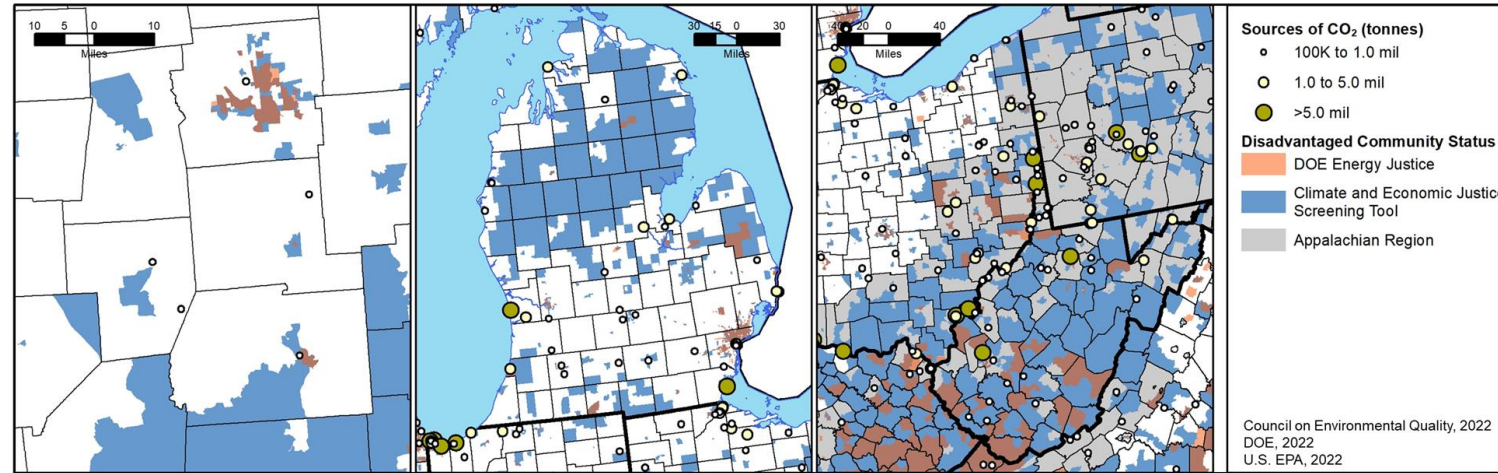
DOE Justice40 Policy Priorities

There are eight defined DOE Justice40 Policy Priorities

1. Decreased energy burden.
2. Decreased environmental exposure and burdens.
3. Increased parity in clean energy technology access and adoption.
4. Increased access to low-cost capital.
5. Increased clean energy enterprise creation and contracting for Minority Business Enterprises/Disadvantaged Business Enterprises.
6. Increase clean energy jobs, job pipeline, and job training for individuals.
7. Increased energy resiliency.
8. Increased energy democracy.

Justice40 Assessment: Using the Government Tools

An understanding of underlying issues could help guide impact mitigations and/or benefits.



Local (Central Ohio)

Hub (Michigan Basin)

Distributed (Central Appalachian Basin)

Scenario	No. Tract	Underserved		Climate Change		Energy		Health	
Local	321	123	38%	5	1.6%	19	5.9%	99	31%
Hub	3,060	1,106	36%	49	1.6%	575	19%	843	28%
Distributed	2,581	1,013	39%	327	13%	359	14%	703	27%
All MRCI	30,671	9,856	32%	1,783	5.8%	3,128	10%	5,515	18%

Scenario	Legacy Pollution		Transportation		Water		Workforce Dev.		Housing	
Local	32	10%	31	10%	10	3.1%	72	22%	61	19%
Hub	313	10%	397	13%	529	17%	585	19%	656	21%
Distributed	374	14%	287	11%	145	5.6%	348	13%	422	16%
All MRCI	4,169	14%	3,421	11%	2,903	9.5%	5,835	19%	5,654	18%

Projects offer benefits to these categories. Well-designed projects are unlikely to negatively impact them.

Project could offer benefits to these categories. Poorly designed projects may negatively impact them.

Projects may negatively impact these categories. Well-designed projects will mitigate impacts and/or add benefits.

Suggestions for effective Justice40 Plans

- Use tools to plan and research
- Find community groups and recognized minority serving institutions for the constituents you want to reach
- Consider the DOE Policy Priorities and figure out what and how the proposed project will impact them
- Ask the experts
- Beware of stakeholder fatigue and plan accordingly



MRICI

Midwest Regional Carbon Initiative